



Heavy Duty Oil Mist Exhaust Filters

"HDL" Series 3" MPT - 8" 125/150# Pattern Flange

APPLICATIONS & EQUIPMENT

- Vacuum Furnaces & Ovens
- Vacuum Freeze Drying & Outgassing
- Custom Vacuum Pumping Systems
- Vacuum Drying
- Vacuum Metallizing
- Vacuum Coating
- Food Processing & Packaging
- Industrial Vacuum Processes
- Medical Industry
- Industrial Aerosol Scrubbing
- Pressure Unloading Vents on Piston Compressors
- Blower Exhaust Oil Mist Removal
- Applications requiring low delta p Coalescing of Large air volumes

FEATURES & SPECIFICATIONS

- **Minimum** 99.97% D.O.P. on 0.3 micron particles
- Captures oil fog, mist or smoke from exhaust of oil flooded vacuum pumps
- Large oil holding capacity and easy field maintenance
- 10 PSIG proof pressure
- Positive engagement O-ring seal system
- Rugged all steel construction w/baked white enamel finish
- 1/2" drain tap standard
- Inlet/outlet 1/4" gauge taps
- Multiple separation stages in a single element design
- Pleated filter element provides increased surface area for low back pressure separation of ultra-fine oil mists
- Temp (continuous): min 40°F (4.4°C) max 220°F (104°C)
- Often used in conjunction with existing air/oil separation equipment
- Filter change out differential: Please refer to Vacuum Pump Manufacturer's specifications

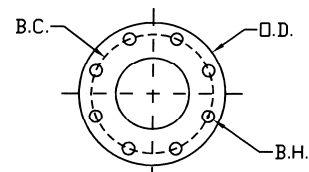
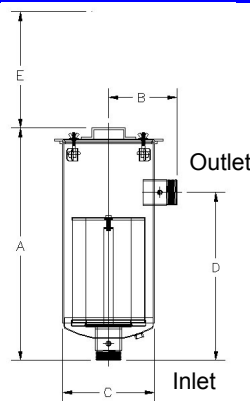
OPTIONS (Inquiries Encouraged)

- Available in **Stainless Steel**
- Epoxy or Teflon coated housings
- Specialty media & gaskets/seals for custom installations/applications
- Flange adapters
- For **Severe** applications contact rep
- Activated carbon postfilters to reduce order

CONFIGURATION



DRAWING



Flange Orientation

Note: All bottom inlet to side outlet flanges are orientated "split center".

Dimension tolerance $\pm 1/4"$

Model No.	Inlet & Outlet	Connection Style	DIMENSIONS - inches					Nominal Vacuum Pump Rating	SCFM Element Rating	Approx. Wt.lbs
			A	B	C	D	E			
HDL-PSG344/2-300	3"	MPT	31 1/8	9	14	22 1/2	15	300	500	75
HDL-PSG344/2-400	4"	MPT	31 1/8	9	14	22 1/2	15	500	500	78
HDL-PSG474/2-500	5"	MPT	38 1/8	11	18 1/2	29 1/2	22	800	1100	160
HDL-PSG474/2-600	6"	MPT	39 1/8	12	18 1/2	30 1/2	22	1100	1100	160
HDL-PSG476-800F	8"	FLG	38 13/16	14	21	25 1/2	22	1800	1800	180

125/150# Pattern Flg	DIMENSIONS - inches			No. of Holes	Flange Thickness
	O.D.	B.C.	B.H.		
8"	13 1/2	11 3/4	0.88	8	0.38

OIL MIST EXHAUST FILTERS
HDL, ATS, EE, EFDB, EF, Series